

# C393

## Frozen Carbonated Beverage Freezer

Three Flavor



### Features

Dispense a light, fluffy, high overrun slush product in a pressurized system from this modular, counter-top freezer. Optional non-pressurized system produces a wetter, lower overrun slush. Air is discharged out the top of the unit to accommodate tight counter space. Optional cart converts the unit to a self-contained floor model, and provides storage for the syrup.

### Freezing Cylinder

Three, 7 quart (6.6 liter).

### Dispensing Door

Clear plastic dispensing doors allow customers to see slush being made. Self closing draw handles are standard. Round dispensing nozzle conveniently fits the hole in domed lids.

### Indicator Lights/Audible Alarm

Lights illuminate and audible alarm sounds to indicate loss of CO<sup>2</sup>, water or syrup on the affected freezing cylinder. The other flavors will continue to operate when one loses syrup. A snooze feature may be activated to silence the alarm for 30 minutes.

### Automatic Defrost

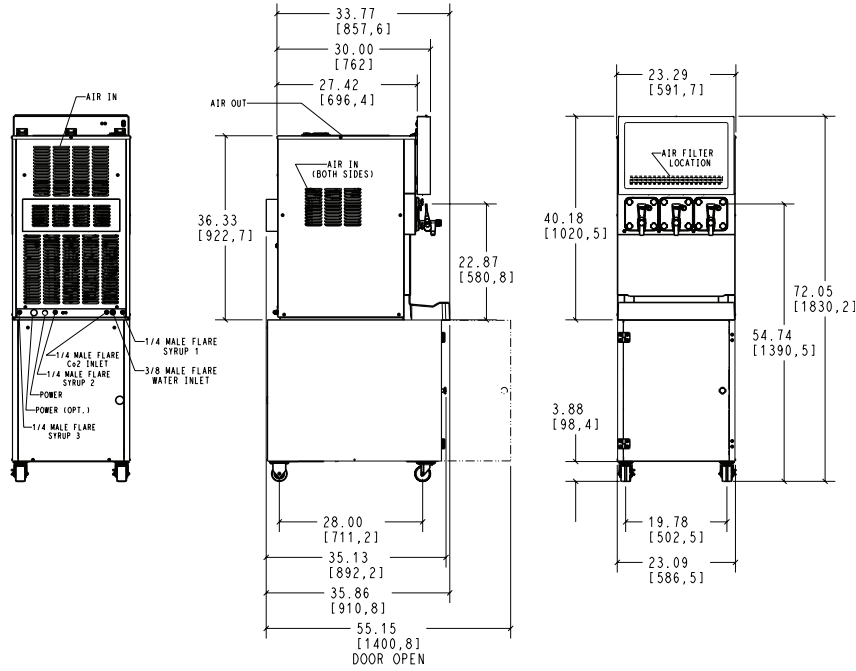
Programmable defrost cycles allow the operator to select the time and frequency for defrosting each freezing cylinder independently. The defrost light flashes to warn customers not to draw product from the freezing cylinder that is being defrosted. At the end of the defrost cycle, the freezing cylinder automatically returns to the freeze-down mode.

### Air Filter

Removable, cleanable air filter helps keep condenser clean for optimal refrigeration system performance.

### Merchandising

LED display backlights translight and illuminates clear dispensing doors to draw customer attention. This display provides energy efficient, even, consistent lighting.



Weights	lb.	kg
Net	441	200.3
Crated	507	230.0

\*For reference only

	cu. ft.	cu. m
Volume	40.8	1.16

Dimensions	in.	mm
Width	23-19/64	591.7
Depth	35-7/8	910.8
Height	40-3/16	1020.5
Counter Clearance	---	---

\*Designed to rest on a plastic pad directly on counter top or optional cart.

Electrical	Maximum	Minimum	Poles (P)
	Fuse Size	Circuit Ampacity	
208-230/60/1 Air	25	17	2P 3W
208-230/60/3 Air	15	12	3P 4W

This unit may be manufactured with other electrical characteristics and may have additional regulatory agency approvals. Consult the local Taylor distributor for other electrical characteristics and agency approvals based on specific electrical and country requirements.

(For exact electrical information, approval marks, and refrigerant, always refer to the data label of the unit.)

**Continuing research results in steady improvements. Therefore, these specifications are subject to change without notice.**

**Bidding Specs**

Electrical: Volt \_\_\_\_\_ Hz \_\_\_\_\_ ph \_\_\_\_\_  
 Neutral: Yes No      Cooling: Air Water NA

Options: \_\_\_\_\_

All options may not be available in combination with others or with all electrical or cooling configurations. Please consult your local Taylor distributor.

**Authorized Taylor Distributor**



2580 S Tejon St, Englewood, CO 80110  
 303-825-0171  
 RMDColorado.com

**Specifications**

**Electrical**

One dedicated electrical connection is required. See the electrical chart for the proper electrical requirements. Manufactured to be permanently connected. Consult your local Taylor distributor for cord and receptacle specifications as local codes allow.

**Beater Motor**

Three, 1/6 hp.

**Refrigeration System**

One, 12,500 BTU/hr. compressor (nominal rating). R449A. (Actual BTUs will vary based on application.)

**Potable Water Pressure**

Minimum 25 PSI for proper operation of carbonation system.

**Air-Cooled**

Minimum Clearance: 0 in. (0 mm) around sides, 3 in. in rear and 12 in. (305 mm) on the top of the unit. Minimum air clearances must be met to ensure adequate airflow for optimum performance.

**Options**

- Syrup Tank Fittings
- Syrup Storage Cart: Includes shelves for storing BIB FCB syrups and mounting BIB pumps (not included).

**Cart Dimensions**

Width: 23-1/8 in. (587 mm)  
 Depth: 35 in. (889 mm)  
 Heights: 32-1/8 in. (816 mm)

**Cart Weights**

Net: 121 lb. (54.9 kg)  
 Crated: 148 lb. (67.1 kg)



750 N. Blackhawk Blvd.  
 Rockton, Illinois 61072  
 www.taylor-company.com